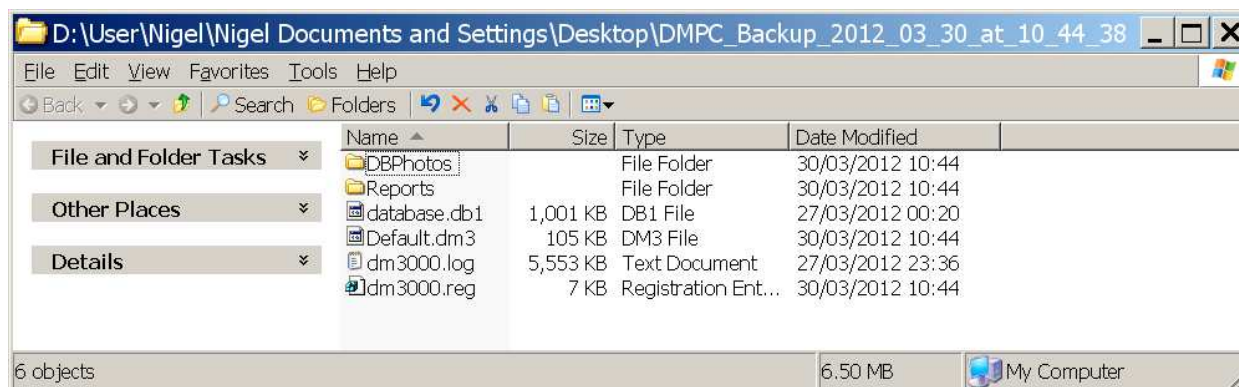


Migrating Doorman 3000 PC Control (DMPC) to a New Computer - Rev 1.2

1 Make a backup of your existing configuration on the old computer. If you can run the old version of DMPC, then this can be done using the System Backup button. You must be Offline to enable this button. Save the files/folders to a USB stick. If you cannot run the software, then you need to manually locate and copy the files, see section **Locating the Configuration Files** below. **Remember to exit DMPC before manually copying the files.** You should end up with a copy of the files and folders as in the window below.



The System Backup will save: *Default.dm3*, *database.db1*, *dm3000.log* files and the *DBPhotos* and *Reports* folders and save the registry settings in *dm3000.reg*. If you copy the files manually, you won't have the *dm3000.reg*, registry settings, but these are not critical, and mostly just save the last used options within the program. The most critical files are *Default.dm3* which contains all the settings for the Base Unit, and *database.db1* which contains all the accounts (names, addresses etc).

2 On the new computer, do a clean install of the new DMPC software from the CD.

3 Ensure the Dongle is attached (or can be done first).

4 Run clean software to check Dongle. Your configuration will not be set-up, all tabs will be 'empty'. If the PC Control logo at bottom left has "Demo" in red across it, then the Dongle has not been attached or is faulty. DO NOT connect to base unit at this stage (stay Offline).

5 Now find the (blank) configuration files area, see section **Locating the Configuration Files** below.

6 **Ensure DMPC is not running**, then copy over *Default.dm3*, *database.db1*, *dm3000.log* files and the *DBPhotos* and *Reports* folders. Run the *dm3000.reg* file, if there, by double clicking it.

7 Run the DMPC software again and the original config should now be there.

8 Connect to the Base Unit by clicking 'Online'. If there are differences reported, then you must decide which is the more correct. E.g. there may have been some manual changes made using the Base Unit's keypad/LCD interface.

9 Go Offline, then make a fresh backup.

Locating the Configuration Files

This is how to locate the current configuration files. It is preferable, if possible to take copies of the configuration by using the System Backup button from within the program. The methods below allow you to locate the files directly.

Please exit DMPC before copying the files.

1 If you can run DMPC, then do so. On the Reports Tab, if there is a "View Report Folder" button then click it, to open an Explorer window. Go up 1 level in the folder hierarchy to the DM3000 folder. You should find the files here.

2 If there is no "View Report Folder" button, then you have a very old version, and the files will be located in the same folder as the DM3000.exe program file, normally C:\Program Files\EBF Card Systems\Dm3000. Use Explorer to go directly there.

3 If you cannot run DMPC, or you just have the disk from the old PC. First check in the original disk's program folder, this is normally C:\Program Files\EBF Card Systems\Dm3000. If there is a shortcut called "DATA FILES ARE HERE", click through this, and it should lead to "C:\Documents and Settings\All Users\Application Data\Brooks\DMPC\Dm3000" on XP or "C:\ProgramData\Brooks\DMPC" on Vista/Win7. You should find the files here.

4 If there is no "DATA FILES ARE HERE" shortcut then the files should be in the program folder, C:\Program Files\EBF Card Systems\Dm3000